

# Kameyama News

かめやまニュース (平成29年12月号)

英語版



December 1st, 2017  
No. 105

## Xmas goods making classes (Xmas 体験教室)

### Candle making

(Advance reservation takes precedence.)

Production cost : ¥300 per one

Class: 1st class [10:30 to 11:30]

2nd class [13:00 to 14:00]

3rd class [14:30 to 15:30]

(Maximum participants per class:

10 people) Required time: 60 minutes

### Garland making

(The first come, first served basis)

Production cost : ¥500 per one

Time: 10:00 to 15:00

Required time: 30 to 60 minutes

### Others

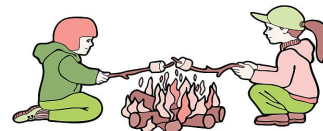
• Marshmallow making with bonfire (Production cost : ¥50 per piece)

• Wreath making (Production cost : ¥300 per one / Required time: 30 to 60 minutes)

**Inquiry: Kameyama Sunshine Park (Response: Mori (TEL: 080-2632-8840))**

Date: December 2 (Sat) and 3 (Sun), 10:00 to 15:00

Place: Kameyama Sunshine Park (In case of the rain, this is cancelled.)



## Human Rights Week : December 4 to 10 (12月4日～10日は 人権週間)

**Inquiry: Kyōsei Shakai Suishin Shitsu (TEL: 0595-84-5066)**

Human rights are;"Everyone has the right to secure life and freedom and pursue happiness".

Or "Everyone has the right to have in birth and live human beings as human beings".

In addition, human rights are not difficult. Anyone can understand and feel with their hearts.

We recognize the importance of respecting human rights correctly, and think about the feelings of others.

Let's act with heart that acknowledges each individual's differences.

### Foreign - language Human Rights Hotline

**Inquiry: Hōmu-syo Jinken Yōgo Kyoku (TEL: 0570-090911)**

Have you been denied an apartment? Do you feel excluded due to cultural differences?

If you are experiencing problems like these, please give us a call.

Reception time: 9:00 to 17:00 (Weekdays) ※ Call rates to the call center will be charged.



## The 13th Human Festa in Kameyama (第13回ヒューマンフェスタ in 亀山)

**Inquiry: Human Festa in Kameyama Jikkō linkai Jimukyoku/Kyōsei Shakai Suishin Shitsu (TEL: 0595-84-5066)**

The purpose of this Festa is to understand deeply human rights. We need to make a society that we always live true to ourselves freely, confidently, and peacefully. The Festa is held in accordance with the human rights week of December 4th to 10th every year, joined by people of all ages. Please come and enjoy the Festa!

**Date and time:** December 9 (Sat), 11:00 to 16:00

**Place:** Idagawa elementary school, Gymnasium **Entrance fee:** Free of charge

### Contents:

- A father of 2 children with autism and the older child no-genre unit "RAMO" concert
- Human rights essay presentation by middle and high school students
- Exhibition of human rights posters and calligraphy by elementary and junior high school students
- Exhibition booths and goods sales etc. by various organizations
- Sales of Kameyama miso fried noodles, Aji-gohan etc.



**Population of Kameyama City (亀山市の人口) ...49,883**

**Population of foreign citizens... 1,936 (Ratio...3.9%)**  
From data in November, 2017



Brazilian: 859



Chinese: 302



Vietnamese: 189



Filipino: 121



Bolivian: 92



Indonesian: 81



Peruvian: 76



Korean: 65



Others: 151

**Inquiry: Chiiki Fukushi Shitsu (AIAI TEL: 0595-84-3313)**

"The Disabled Week" is a week to deepen the interest and understanding of disability and the disabled. Also, that week conduct enlightening activities in which people with disability increase motivation for social participation.

**Services for people with disability to live independently in the community**

● **Disability welfare service**

People who want to use disability welfare services need a certificate issued by the city  
 < Main services > Visiting nursing care, Living care, Short term residency care

● **Disabled Parking Permit ("Mie Omoiyari parking lot") usage certificate system**

People with disability, pregnant women and others, who cannot walk easily can use it.  
 We will issue a usage certificate of Disabled Parking Permit ("Mie Omoiyari parking lot") installed in public facilities and shops.



● **Discount system**

Toll discount system for toll roads

In the following cases, discounts on toll roads (50%) will be accepted (procedures require before use).

- When a person with physical disability drives a car by himself / herself.
  - When a care giver drives a car that a person with severe physical disability or intellectual disability ride.
- ※ When a care giver drives, there are restrictions on the type of disability and the grade.  
 ※ Only one car can be registered per a disabled person.

**Allowance for persons with disability (children) / Welfare Service for care givers**

● **Payment of special disability allowance**

It is paid to people over 20 who need special care at all times in their daily lives (be at home, severe disabilities overlap etc.).  
 <Payment amount> ¥26,810 per month (There are restrictions depending on income)

● **Payment of welfare allowance for disabled children**

It is paid to people under the age of 20 who have severe disability and need extra care at all times in daily life.  
 <Payment amount> ¥14,580 per month (There are restrictions depending on income)

● **Payment of special child-care allowance**

It is paid to people who support children that are under the age of 20 with moderate to severe disability.  
 <Payment amount> Grade 1: ¥51,450 per month  
 Grade 2: ¥34,270 per month (There are restrictions depending on income)

● **Consultation support center for persons with disabilities "AI"**

It is a consultation organization for the following people;

- People who have physical disability, intellectual or mental disability. Or their families.
- People who isolate themselves from social life. Or their families.

We accept various consultations such as social participation, employment, daily life etc.

Please do not hesitate to ask if you have any problems or consultation.

We also accept telephone / visit consultation besides consultation at the office.

Inquiry Shōgai-sha Sōgō Sōdan Shien Center "AI" ("AIAI" 2nd floor TEL: 0595-84-4711)

としょかん し  
**Information from Library (図書館のお知らせ)**

**Inquiry: Municipal Library (TEL: 0595-82-0542), Seki Library (TEL: 0595-96-1036)**

Several events for children will be held by Municipal Library.

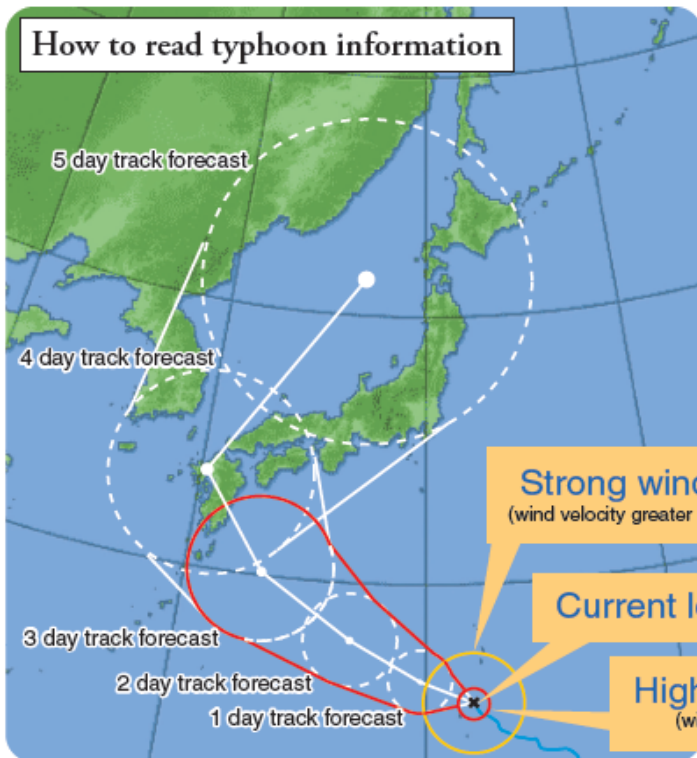
Please enjoy the events with parents and children.

Name of event	Date and time	Place
Mommy's story telling	December 2 (Sat), from 14:00	Municipal Library, children's room
Mommy's story telling for adults	December 2 (Sat), from 15:00	
Xmas party	December 23 (Sat), from 13:00	
Anime movie show for children	December 6 (Wed), from 15:00	Seki Bunka Kōryū Center
Seki story telling	December 13 (Wed), from 15:00	



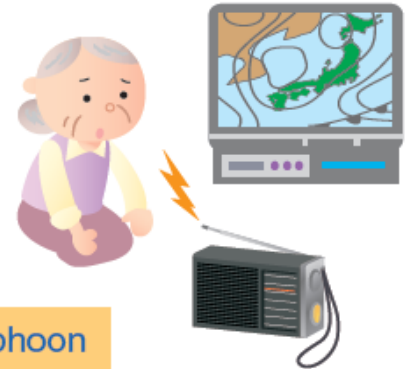
Inquiry: Kiki Kanri Shitsu (TEL: 0595-84-5035)

## Preparing for typhoons and heavy rain!



Based on info from the Japan Meteorological Agency's homepage

Typhoon season is from August to October. The strong winds, tidal waves and torrential rain that occur as a result of a typhoon can cause a great deal of damage. When a typhoon approaches land or there is continuous rainfall, please keep up to date by listening to the radio or watching TV.



### What to do in the event of a typhoon with strong winds



**【If you are outside】**  
 Find a nearby building and enter it in order to avoid any falling trees or blowing objects.



**【If you are inside】**  
 Do not go outside. Close the shutters to prevent possible glass shards from flying inside.



**【If you are in the ocean】**  
 Head to higher ground to avoid incoming waves.

### What do to in the event of a typhoon with heavy rain



**【If you are near a river】**  
 Do not enter the river because it is extremely dangerous.



**【If you are driving】**  
 Head for higher ground. If your car shuts down while driving through water, get out of the car and evacuate.



**【If you are outside】**  
 Head for higher ground.

### List of useful typhoon-related words

Japanese	Roma-ji	English
注意報	Chuiho	Issued when there are heavy rain and strong winds .
警報	Keiho	Issued when the rainfall and strong winds exceed the level in a chuiho.
暴風雨	Boufuu	Heavy winds and rain
洪水	Kozui	Flooding caused by heavy rain
高潮	Takashio	High waves caused by typhoons
崖崩れ	Gakekuzure	Colds and stones slide from mountains



こころ からだ  
**Yoga class of mind and body (心と体のヨーガ)**

**Inquiry: Sports Kenshū Center (TEL: 0595-82-9092)**

- Date: From January 12 (Fri) to March 23 (Fri) (10 times in total)  
Every Friday (However, February 9 (Fri) is closed.)
- Class: 1st class [9:30 to 10:30] / 2nd class [11:00 to 12:00](Maximum participants per class: 20 people)
- Place: Sports Kenshū Center, Japanese style room (Address: Nomura-chō 2 chōme 5-1)
- Course fee: ¥5,000 (Bring your course fee and apply to the sports Kenshū Center.)  
※ Please note that course fee once paid will not be refunded even if you are canceled halfway.
- Application start date: December 5 (Tue) 9:00 am



しげい のうふ べんり かくじつ こうざふりかえ  
**Use direct debit for payment of city tax (市税の納付は便利で確実な口座振替を！)**

**Inquiry: Nōzei Shitsu (TEL: 0595-84-5009), Hoken Nenkin Shitsu (TEL: 0595-84-5006)**

For payment of city tax, please use direct debit which can be automatically paid from your account. You can save time and effort to pay for each delivery date. And you will not forget to pay inadvertently. You can do the procedure at city hall counter or at a financial institution dealing with direct debit.

Type of tax:

Fixed property tax / City planning tax / Light-weight motor vehicle tax / Municipal and prefectural tax / National Health Insurance tax

がつ のうぜい  
**Due date in December (12月の納税)**

Due date of the payment and direct debit payment: December 25 (Mon) or January 4, 2018 (Thur)

Please pay the following taxes:

Fixed property tax/City planning tax, the 3rd payment (December 25)

National Health Insurance tax, the 6th payment (December 25)

Latter-stage Elderly Healthcare Insurance premium, the 6th payment (January 4, 2018)

Nursing care Insurance premium, the 5th payment (December 25)

Note: We recommend direct debit for payment of tax, etc which is convenient and reliable.

**Emergency medical care during night-time, after hours, on Sundays and Holidays in December**

がつやかん じかんがい きゅうじつ おうきゅうしんりょう  
**(12月夜間・時間外・休日の応急診療)**

**Inquiry: Kameyama City Office (TEL: 0595-82-1111)**

**ATTENTION:** Since these two systems below are for emergency, please refrain from continuous or repeated visits.

**The doctor on duty for the day may be changed. Please confirm by phone before going to the doctor's office.**

◎ Make sure to bring health insurance certificate, medical care certificate (such as infant medical care), medical consultation fee and medicine notebook (or actual medicine being taken).

◎ Please see doctor in day-time as far as possible.

※ Regarding the emergency case, call Mie Pref. Kyūkyū Iryō Jōhō Center (TEL: 059-229-1199)

◎ In case of child's emergency, call "Mie child medical care dial."

TEL: #8000 or  
059-232-9955,  
19:30 to 8:00  
(next morning)



**NIGHT-TIME and AFTER OFFICE HOURS**

(except Sundays and Holiday)

**Consultation hours: 19:30 to 22:00 / Reception hours: 19:00 to 21:30**

Day (December)	Name of Medical Institution	Address	Phone (0595)
1, 2, 4, 6, 7, 8, 9, 11, 12, 13, 14, 15, 18, 20, 21, 22, 25, 26, 27, 28	Kameyama Iryō Center	Kameda-chō	83-0990
5, 19	Mie Kokyū Enge Rihabiri Clinic	Airisu-chō	84-3536
16	Anoda Clinic	Anoda-chō	83-1181

**SUNDAYS and HOLIDAY**

**Consultation hours: 13:00 to 19:30 / Reception hours: by 19:00**

Day (December)	Name of Medical Institution	Address	Phone (0595)
3 Sunday	Gotō Ganka Clinic	Kita-machi	84-1800
10 Sunday	Seki Clinic	Seki-chō Shinjo	96-2220
17 Sunday	Tora Seikei Clinic	Egamuro 2 chōme	84-1700
23 Holiday	Toyoda Clinic	Minamino-chō	82-1431
24 Sunday	Tanaka Byōin	Nishimaru-chō	82-1335

**Issued by: Social Harmony Promotions Section (Kyōsei Shakai Suishin Shitsu) (TEL: 0595-84-5066)**

**Inquiry: If you have any questions, call above phone number. Portuguese and English interpreters are available.**

といあわせさき かめやまししんぶんかぶぶんかしんこうきょくきょうせいしゃがいずいしんしつ でんわ  
問合先：亀山市民文化振興局 共生社会推進室(電話: 0595-84-5066)